

NOTE: DO NOT DISCARD the Parts List from the Instruction Bulletin. Place the Parts List in the appropriate place in the machine manual for future reference. Retaining the Parts List will make it easier to reorder individual parts and will save the cost of ordering an entire kit.

NOTE: Numbers in parenthesis () are reference numbers for parts listed in Bill of Materials.

Installation instructions for **kit number 9009859**

SYNOPSIS:

This kit contains the parts needed to install a rear squeegee guard on T12 scrubbers.
Please follow step-by-step instructions.

SPECIAL TOOLS / CONSIDERATIONS: NONE

(Estimated time to complete: 2.5 hours)



PROTECT THE ENVIRONMENT

Please dispose of packaging materials, old machine components, and hazardous fluids in an environmentally safe manner according to local waste disposal regulations.

Always remember to recycle.

PREPARATION:

1. Completely empty both the solution tank and recovery tank. Refer to the Operators Manual for instructions how to empty both tanks.
2. Park the machine on a clean level surface, turn off the machine, and remove the key.

FOR SAFETY: Before leaving or servicing machine, stop on level surface, turn off machine, and remove key.

3. Remove the rear squeegee from the machine. Refer to the Operators Manual for instructions how to remove the rear squeegee. Set the rear squeegee aside.
4. Place a chock in front of the front tire, jack up the back end of the machine, place jack stands under the machine, and lower the machine onto the jack stands.

FOR SAFETY: When servicing machine, block machine tires before jacking machine up. Use a hoist or jack that will support the weight of the machine. Jack machine up at designated locations only. Support machine with jack stands.

5. Note gap between the top of the rear tires and the portion of the solution tank directly above both rear tires.
6. Remove both rear tires from the machine. Set both tires, caps, and retaining rings aside. (Fig. 1)

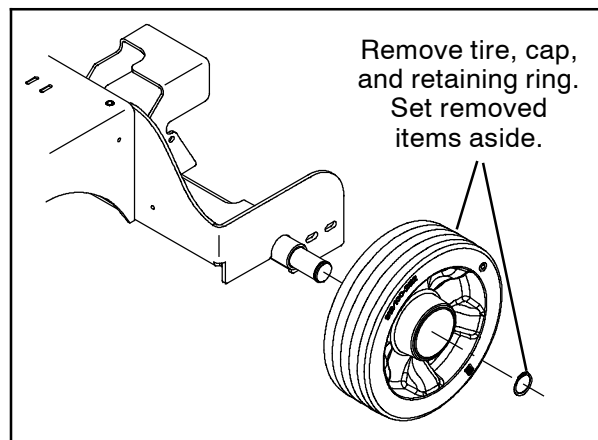


FIG. 1

INSTALLATION:

1. Position supports under the back corners of the solution tank to maintain height of tank on frame of machine. The back of the solution tank must be supported off the frame to remove old parts and install the rear squeegee guard kit. (Fig. 2)

2. Remove the right tank support bracket and the left tank support bracket from the machine. Set the four M8 SEMS hex screws aside. Discard both tank support brackets and the hardware used to secure the tank support brackets to the frame of the machine. (Fig. 2)

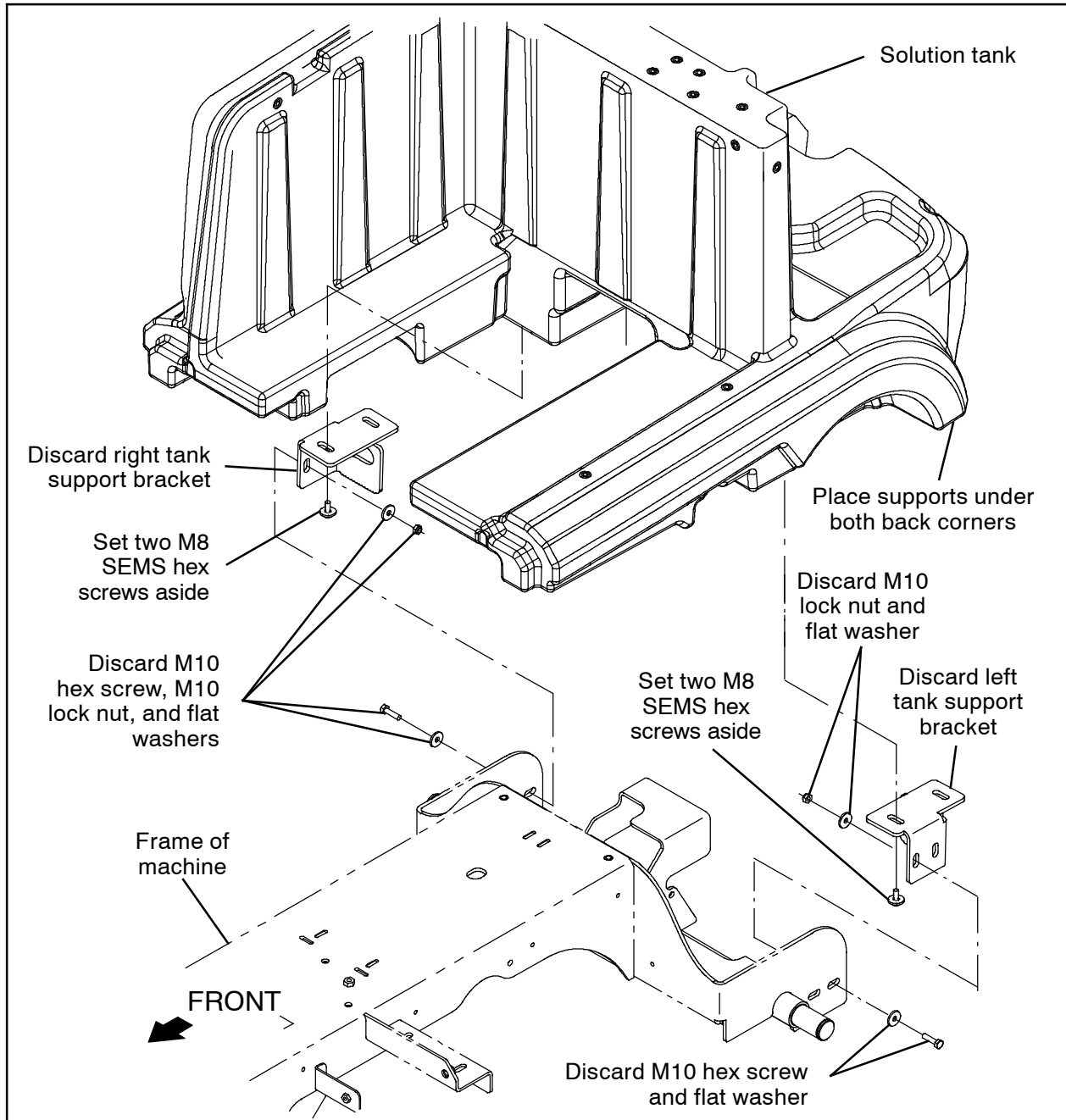


FIG. 2

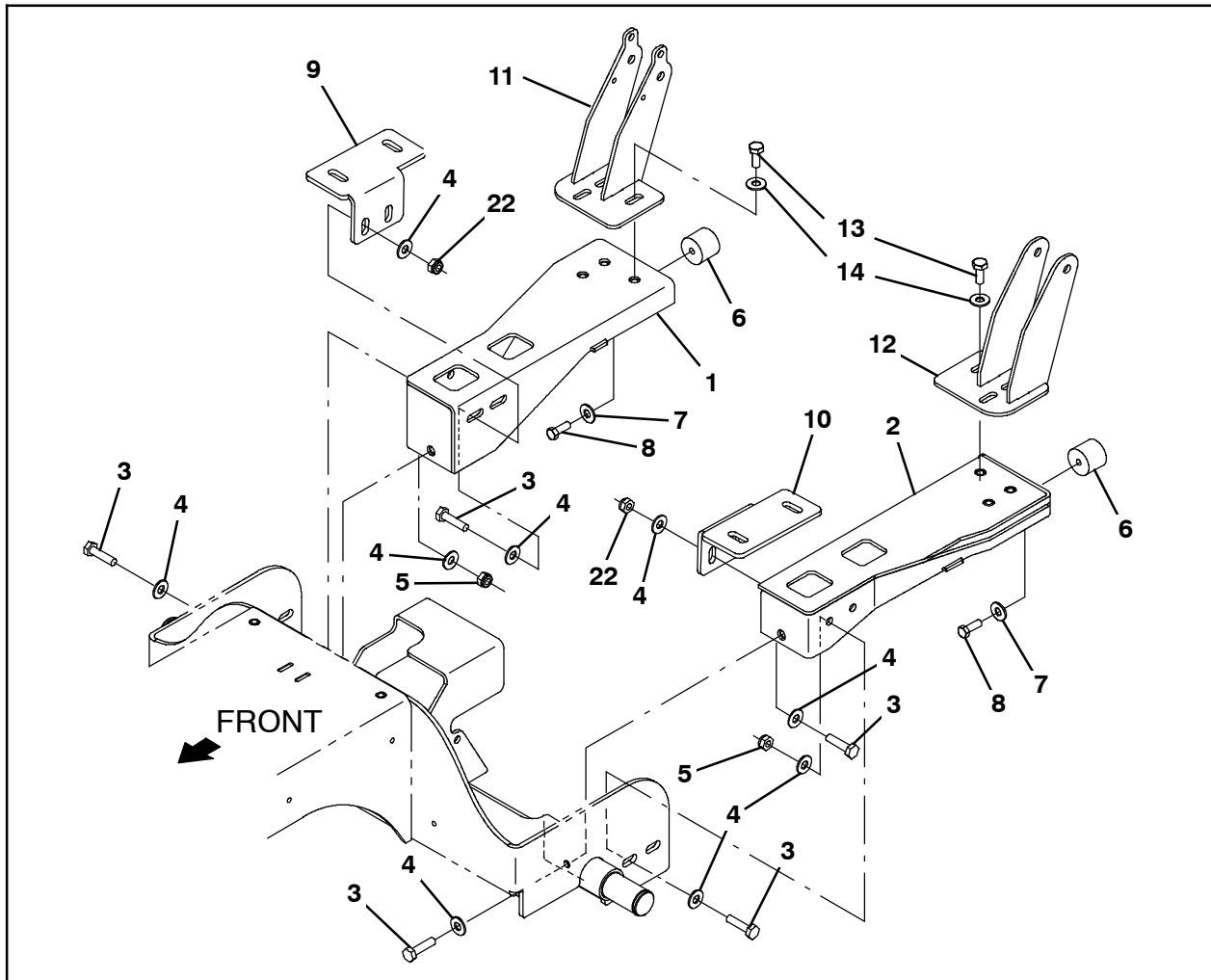


FIG. 3

NOTE: Do not completely tighten the hardware unless instructed to do so in the step. Most hardware is tightened during later adjustment.

3. Use two M8 SEMS hex screws removed in Step 2 to install the right tank support bracket (9) onto the solution tank where the removed support bracket was previously located. (Fig. 2 / Fig. 3)
4. Use two M8 SEMS hex screws removed in Step 2 to install the left tank support bracket (10) onto the solution tank where the removed support bracket was previously located. (Fig. 2 / Fig. 3)
5. Use one M10 hex screw (3) and a flat washer (4) to install the right bumper channel (1) onto the frame of the machine. (Fig. 3)
6. Use two M10 hex screws (3), four flat washers (4), and two M10 lock nuts (5) to install the right bumper channel (1) onto the frame of the machine. (Fig. 3)
7. Use two M10 hex screws (3), four flat washers (4), and two M10 lock nuts (22) to install the right bumper channel (1) onto the right tank support bracket (9). (Fig. 3)
8. Use one M10 hex screw (3) and a flat washer (4) to install the left bumper channel (2) onto the frame of the machine. (Fig. 3)
9. Use two M10 hex screws (3), four flat washers (4), and two M10 lock nuts (5) to install the left bumper channel (2) onto the frame of the machine. (Fig. 3)
10. Use two M10 hex screws (3), four flat washers (4), and two M10 lock nuts (22) to install the left bumper channel (2) onto the left tank support bracket (10). (Fig. 3)
11. Use a hex screw (8) and a flat washer (7) to install a bumper (6) onto the right bumper channel (1) and left bumper channel (2). Completely tighten both hex screws. (Fig. 3)

12. Use three M10 hex screws (13) and three flat washers (14) to install the right guard support (11) onto the right bumper channel (1). (Fig. 3)
13. Use three M10 hex screws (13) and three flat washers (14) to install the left guard support (12) onto the left bumper channel (2). (Fig. 3)
14. Use two M10 hex nuts (16), two flat washers (7), and two M10 lock nuts (5) to install the guard tube (15) onto the right guard support (11) and left guard support (12). (Fig. 3)
15. Tighten all loose hardware to fully secure the rear squeegee protector kit to the machine. (Fig. 2 / Fig. 3)
16. Install the hitch pin (17) onto the cable (18). (Fig. 5)
17. Use one M5 hex nut (19), two flat washers (20), and one M5 hex nut (21) to install the hitch pin (17) / cable (18) onto the right guard support (11). (Fig. 5)
18. Reinstall the rear tires onto the machine.
19. Remove the supports from under the back corners of the solution tank.

20. Remove the jack stands from under the machine and lower the machine to the floor.
21. Reinstall the rear squeegee onto the machine.
22. Use the hitch pin (17) to hold the guard tube (15) in the raised position when not using the rear squeegee guard. Store the pin in the holes in the right guard support (11) when using the rear squeegee guard. Do not leave the hitch pin (17) / cable (18) hanging loose when using the rear squeegee guard. (Fig. 4 / Fig. 5)



FIG. 4

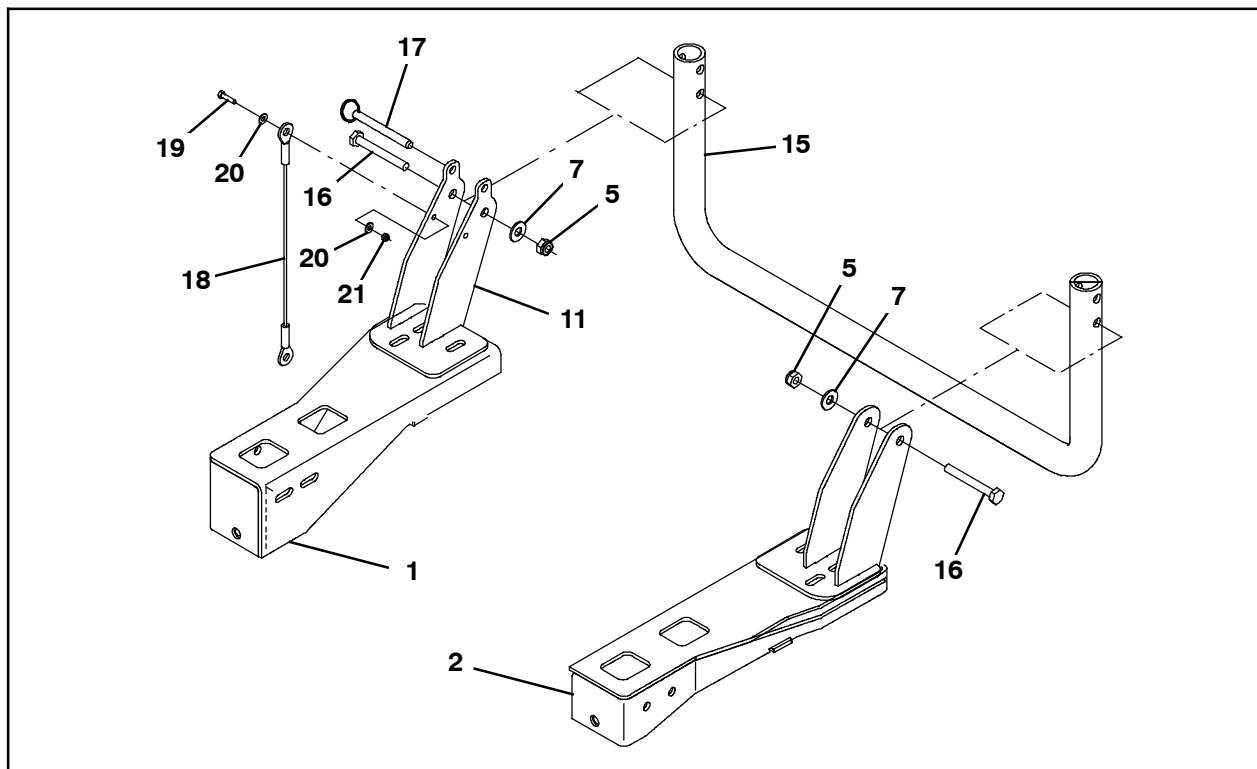


FIG. 5

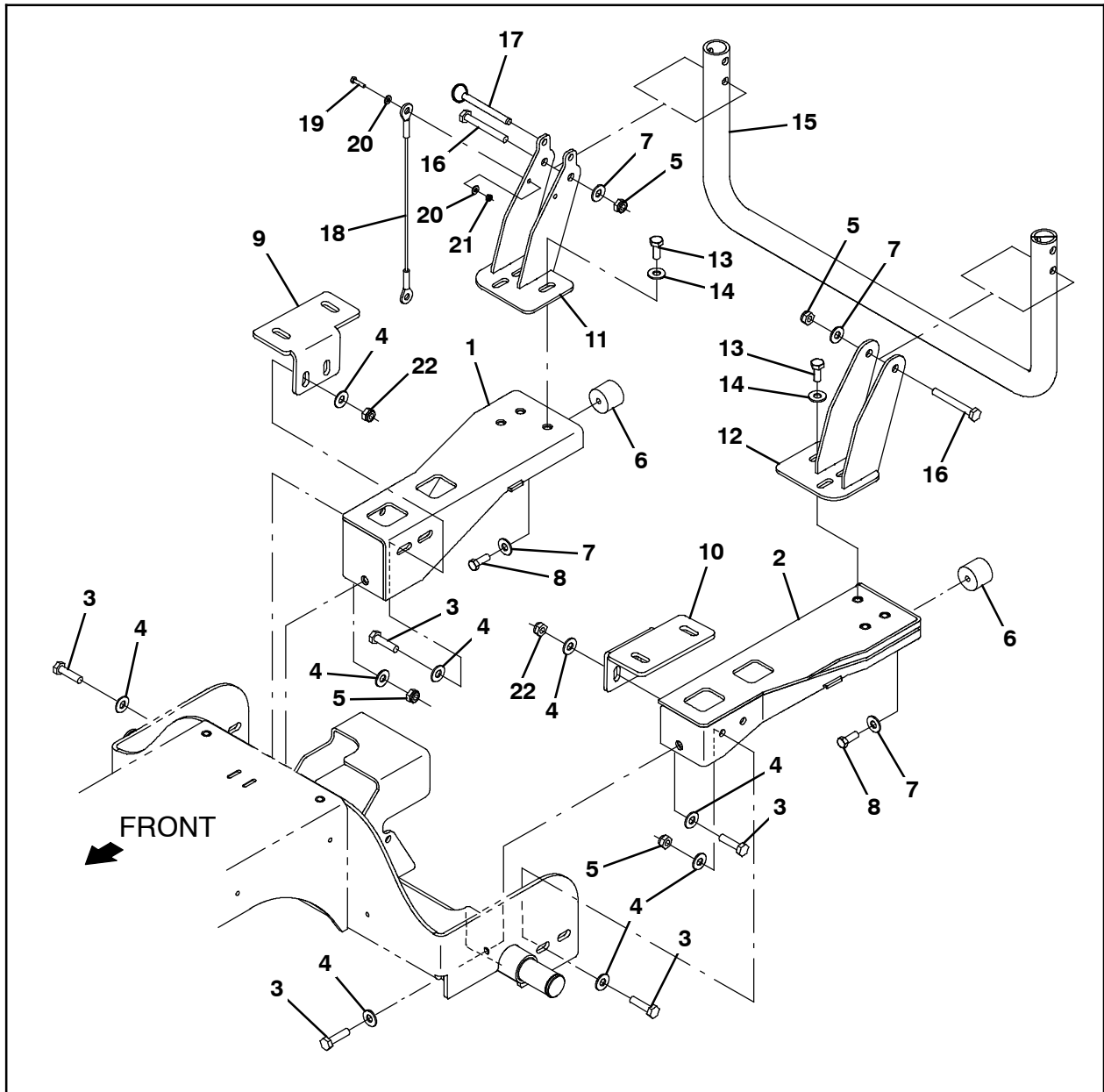


FIG. 6

Bill Of Materials For Squeegee Guard Kit, DI [T12] - 9009859

	Ref.	Tennant Part No.	Description	Qty.
▽		9009859	Squeegee Guard Kit, DI [T12]	1
▲	1	1201496	Channel Wldt, Bumper, RH	1
▲	2	1201503	Channel Wldt, Bumper, LH	1
▲	3	12317	Screw, Hex, M10 X 1.50 X 30, SS	10
▲	4	01686	Washer, Flat, 0.44b 1.00d .08, SS	18
▲	5	08714	Nut, Hex, Lock, M10 X 1.5, NI, SS	8
▲	6	1024977	Bumper, Ure, 1.50d 1.25l	2
▲	7	32492	Washer, Flat, 0.38, Std	4
▲	8	69225	Screw, Hex, .38- 16 X 1.00, SS	2
▲	9	1201499	Bracket, Support, Tank, RH	1
▲	10	1201504	Bracket, Support, Tank, LH	1
▲	11	1202246	Support Wldt, Guard, RH	1
▲	12	1202247	Support Wldt, Guard, LH	1
▲	13	09028	Screw, Hex, M10 X 1.50 X 25, SS	6
▲	14	01685	Washer, Flat, 0.38b 0.88d .08, SS	6
▲	15	1204847	Tube, Guard, Pntd	1
▲	16	06965	Screw, Hex, M10 X 1.50 X 80, 8.8	2
▲	17	369359	Pin, Hitch, .375d X 3.12l, PI	1
▲	18	19676	Cable, Glv .09d 013.0l .38eye /.38eye	1
▲	19	09252	Screw, Hex, M5 X 0.80 X 20, 8.8	1
▲	20	01683	Washer, Flat, 10, SS	2
▲	21	09739	Nut, Hex, Lock, M5 X 0.80, NI, SS	1
▲	22	07787	Nut, Hex, Std, M10 X 1.50, SS	4

TENNANT COMPANY
P. O. Box 1452
Minneapolis, MN 55440-1452